

***WELCOME!***  
***COLLEGE OF HEALTH AND HUMAN SCIENCES***  
***FALL FACULTY MEETING***

Thursday, October 26<sup>th</sup>



**PURDUE**  
UNIVERSITY.

College of Health and  
Human Sciences

# *Call Meeting to Order*



# *Agenda*

- Guest Speaker
- Welcome and College Update
- Updates/Question Time for HHS Committees and Councils
- Other Reports
- Farewell to Dean Underwood
- Adjourn

# Guest Speaker



**Patrick Wolfe**

**Provost and Executive Vice President for  
Academic Affairs and Diversity**

# COLLEGE OF HEALTH AND HUMAN SCIENCES

*MARION UNDERWOOD, DEAN*

Fall 2023 Faculty Meeting



# INCLUSIVE STUDENT SUCCESS

## Enrollment

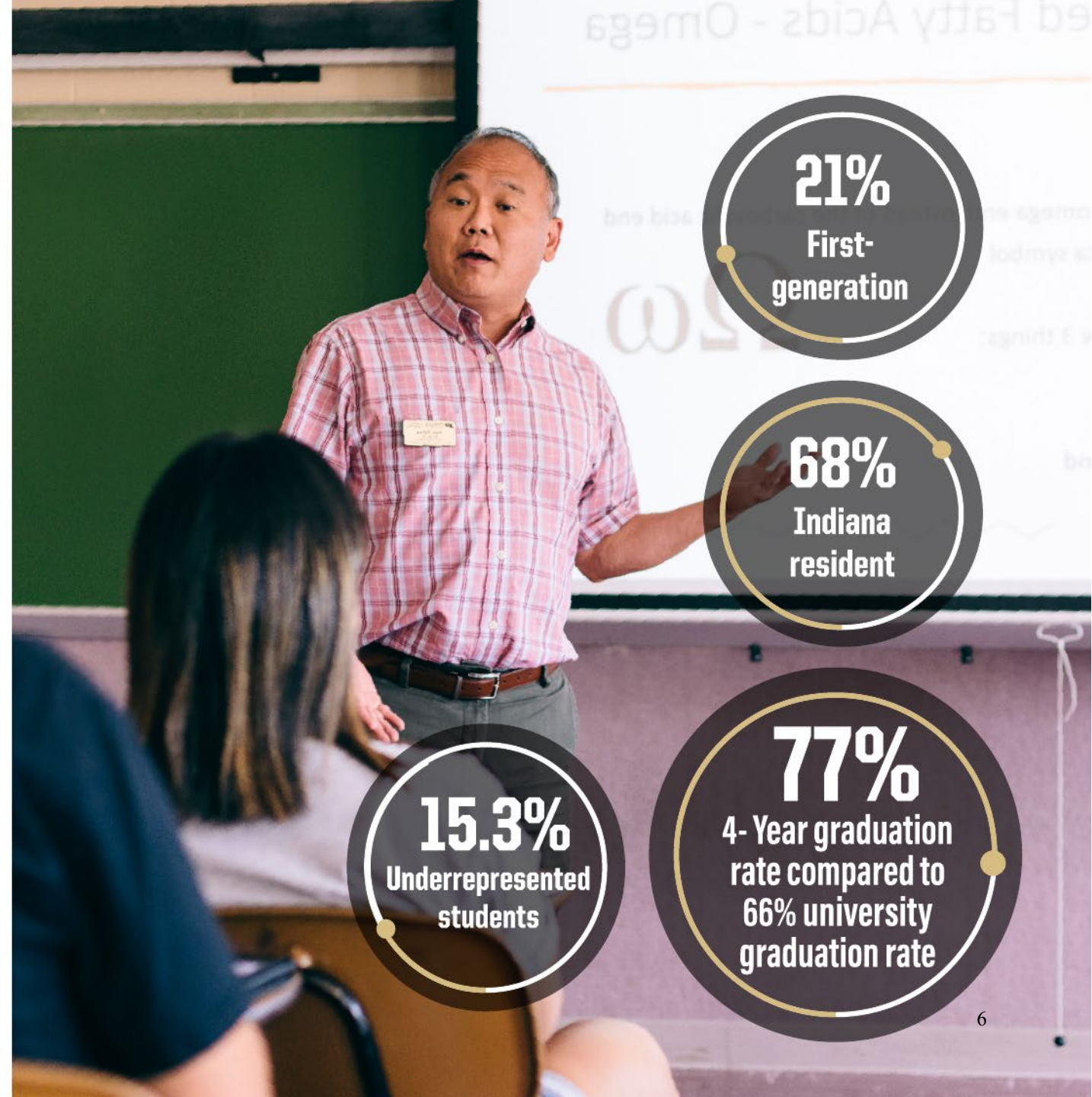
- 5,814 students (largest enrollment to date)
- 5,093 undergraduate (935 new beginners)
- 721 graduate

## Fastest-growing undergrad programs:

Biomedical Health Sciences and Psychological Sciences

## GRADUATE RANKINGS

- #3 Speech-Language Pathology
- #9 Audiology
- #39 Psychology
- #30 Best Nursing School: MS
- #53 Best Nursing School: DNP



**21%**  
First-  
generation

**68%**  
Indiana  
resident

**15.3%**  
Underrepresented  
students

**77%**  
4- Year graduation  
rate compared to  
66% university  
graduation rate

## What can HHS faculty expect for enrollment trends within the college?

- All decisions about undergraduate enrollment are made by Enrollment Management.
- Although HHS applications have increased, the number of admits to HHS has decreased.
- HHS continues to grow because we were successful in yield and attracted ~350 net CODOs last year.
- With the new administration, we have been told Enrollment Management will seek to admit the most qualified students rather than focus on enrollment targets for colleges.
- At the graduate level, admissions decisions will continue to be made by unit faculty, which gives us more control over numbers, depending on funding. The Provost is convening a task force to examine how TA funds are allocated at Purdue. Faculty attracting extramural funding will allow more graduate students to be supported as RAs.



# *HHS Administration Updates*



Chenell Loudermill  
HHS Dean's Fellow,  
DEI for faculty success  
and empowerment



Nimota Nasiru  
HHS facilities project  
manager

# Fall 2023 New Faculty



Shawna Harbin,  
HDFS



Kimberly Updegraff,  
HDFS



Craig Voll, HK



Natasha Jaiswal,  
HK



Thivanka Muthumalage,  
HSCI



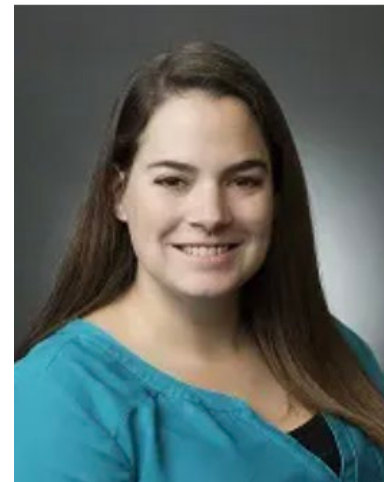
Cherish Batts, NUR



Tasha DeWitt, NUR



Stacie Klingler,  
NUR



Kristen Swartzell,  
NUR



Adam Huffield,  
NUTR

## *Fall 2023 New Faculty*



Hongmi Lee, PSY



James Noll, PSY



Jennifer Jabson Tree, PUBH



Brian Hall, PUBH



Malinda McPherson,  
SLHS



Windi Krok, SLHS

# Faculty Hiring

## Changes by the new administration

- Colleges will no longer have targets.
- We move away from regular hiring and toward talent-based hiring.
- Hiring clinical faculty is encouraged.

## Faculty Hiring Limits for HHS

Where We Started on 8/16/23	Where We Ended on 9/9/23
<p>The upshot of this is that your FY24 hiring plan upper limits for the College of Health and Human Services are as follows:</p> <p>4 advertised junior T/TT searches (includes department heads) 7 T/TT Movable Dream Hires 12 Clinical/Research/CL/LTL</p>	<p>9 tenure-track hires to be approached with open searches. These include:</p> <p>3 FTE for heads (NUR, PSY and KINE) Up to 3 FTE in PSY 1 FTE in SLHS 1 FTE in HDFS 1 FTE in NUR 7 Moveable Dream Hires 12 clinical/professional faculty</p>

## Development Update

**\$100 Million**  
raised over the last five years

# *Student growth* **SIGNATURE** AREAS

## Students



**PURDUE**  
UNIVERSITY®



College of Health and  
Human Sciences

- 1 DEVELOPMENTAL HEALTH AND WELLNESS**
- 2 HEALTHY LIFESTYLES AND VITAL LONGEVITY**
- 3 SUSTAINABLE AND THRIVING COMMUNITIES AND ORGANIZATIONS**

## Developmental Health and Wellness

- Return of the PALS Summer Camp
- Science of Reading
- Research Participant Registry



## Healthy Lifestyles and Vital Longevity

- Nursing and Pharmacy Education Building
- Varcity Senior Living Community
- HHS Extension: Healthy Aging Through Fall Prevention – A Matter of Balance
- Health of the Forces Initiative



# *Improving Human Health and Quality of Life Across the Life Span*

## Sustainable and Thriving Communities and Organizations

- HHS Connex – Undergraduate Organization, Hub, and Summer Experience
- HHS Extension Addressing Mental Health at Work – CREW (Compassion and Resilience Education at Work)
- New Center for Rural Health
- Culinary Innovation in HTM



# ***LOOKING AHEAD***



# ***QUESTIONS?***

# ***HHS RESEARCH REGISTRY***

## **HHS Fall Faculty Meeting**

**October 26, 2023**



**AJ Schwichtenberg**  
**Dean's Fellow, College of Health and Human Sciences**  
**Associate Professor, Human Development and Family Science**



**Amanda Warmbold**  
**Lead Administrative Assistant**

# *What is the HHS Research Registry?*

The Research Registry is a resource that simultaneously elevates our college's visibility, facilitates positive relationships between researchers and participants, and accelerates research in our strategic mission areas.

It will include a list of individuals, families, and community partners who wish to be contacted about research opportunities.

Not a regulatory requirement

Not a data repository (at this time)

# *Roll Out Phases 1-3*

## **Phase 1 - Registrant Entry Only**

No training is required for this phase and registrants can enter themselves or research teams can share the information for potential registrants.

Research Teams can share the HHS Research Registry link  
<http://purdue.link/rr> or <https://hhs.purdue.edu/research-registry> or →



## **Phase 2 - IRB-Approved Study Setup**

This phase requires training and signing the PI use agreement. This is a required step in the process of receiving potential research participant information from the registry.

- (a) To get your study setup in the RippleScience system, please complete this survey  
[https://purdue.ca1.qualtrics.com/jfe/form/SV\\_01BDPHzQEP7LzFQ](https://purdue.ca1.qualtrics.com/jfe/form/SV_01BDPHzQEP7LzFQ)
- (b) Sign PI agreement (sent via DocuSign, link to be sent after survey link above is complete).
- (c) Complete personal or lab-based training (a training link will be provided once your study is added to the RippleScience system)

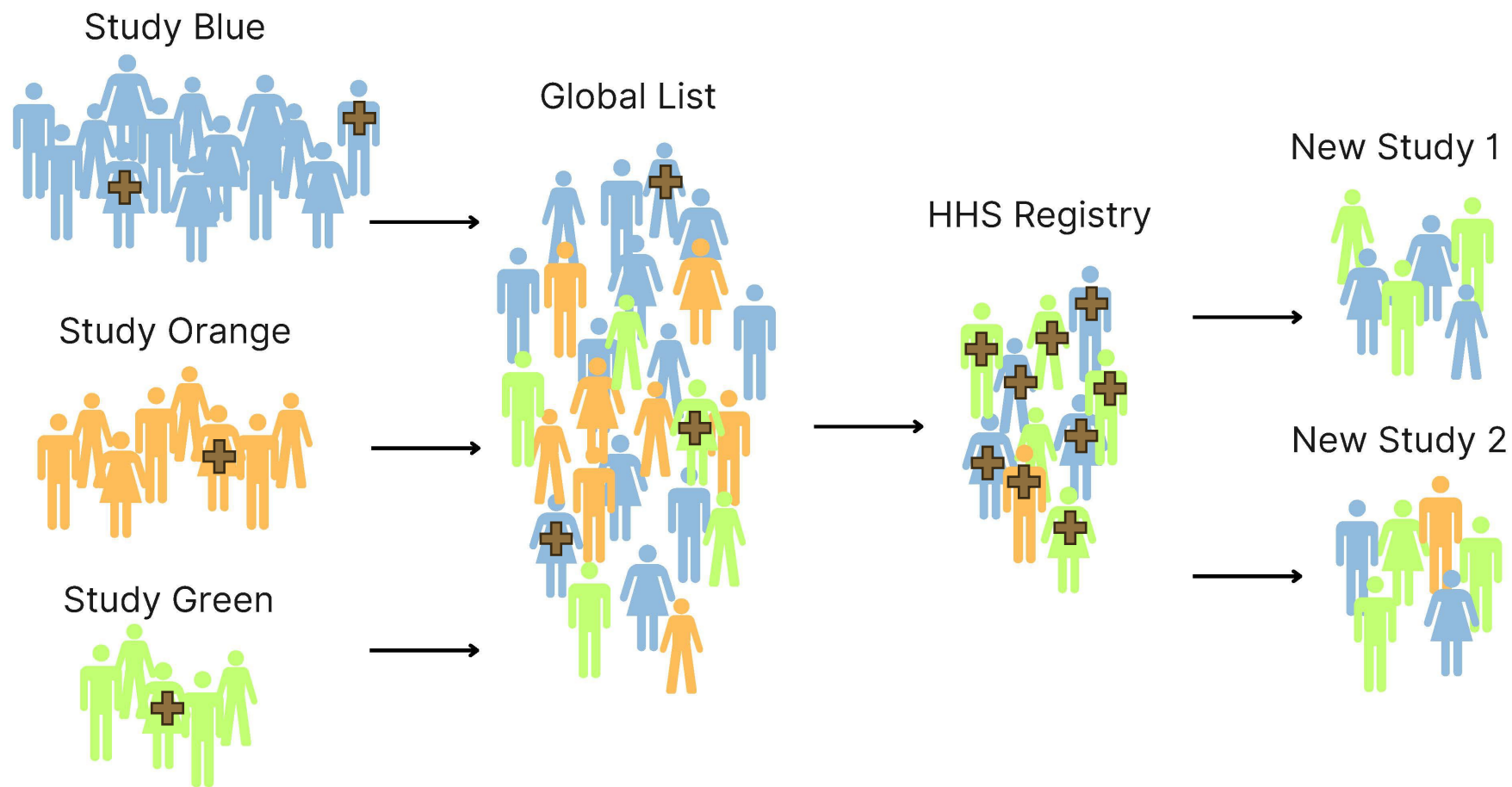
## **Phase 3 – Release of potential participant information from HHS Research Registry to IRB-approved study**

# *PI Use Agreement*

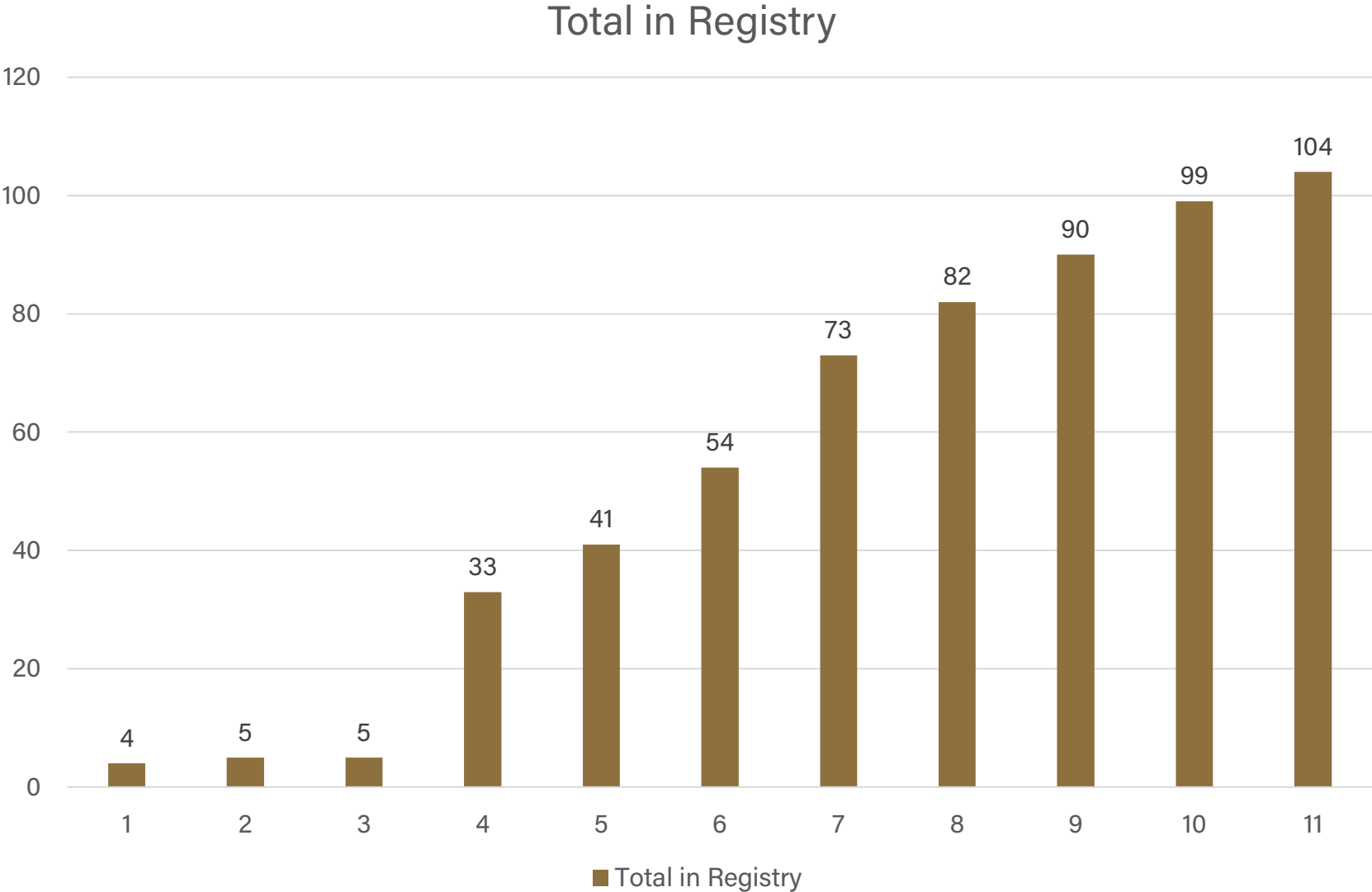
- **Confirm IRB Approved Study**
- **Confirm funding (currently all beta testers are using HHS Use Grants)**
- **Agree to attend Ripple Science Training before use**
- **Offer HHS Registry Option to new enrolls**
- **Use Ripple Science platform to track all HHS Registry shared persons**
- **Do not pull copies for use outside of approved Registry use**

# *HHS Research Registry Tracking and Sharing*

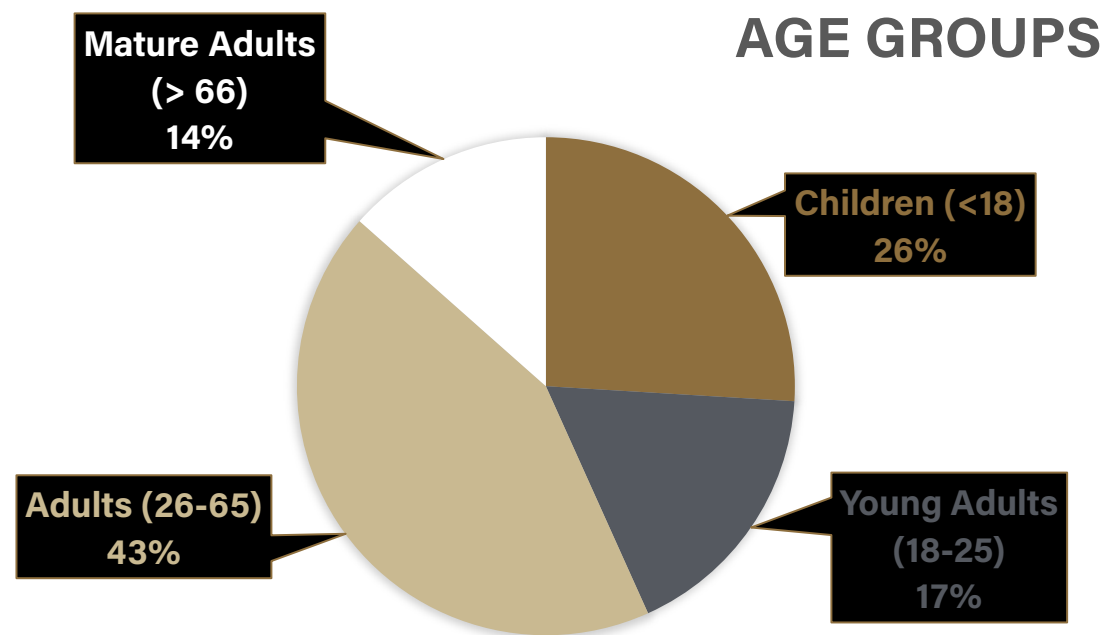
## Participant Flow



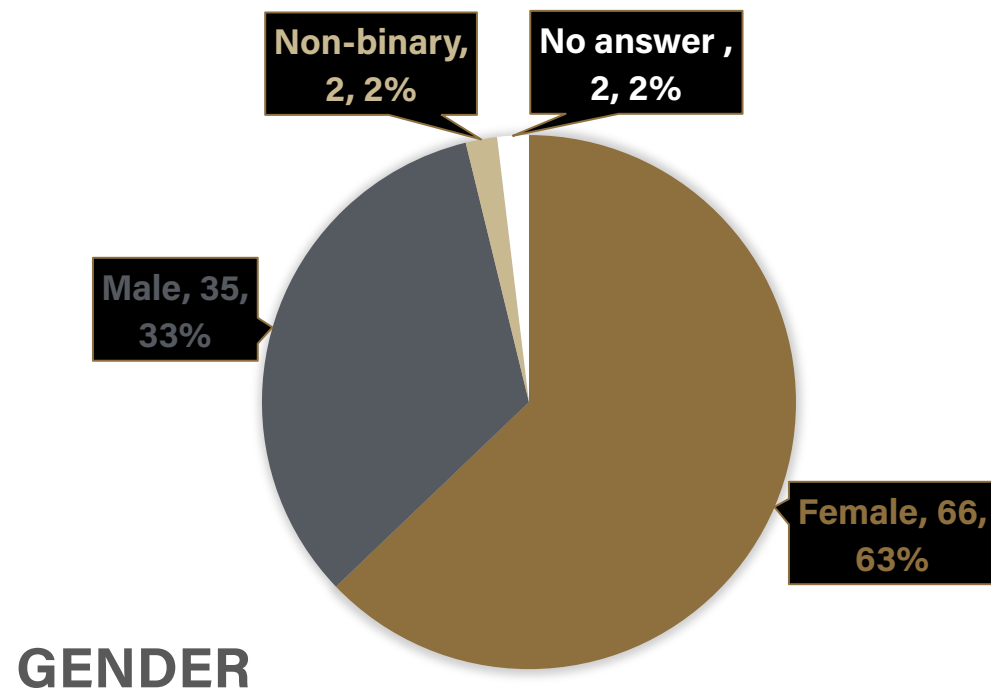
# HHS Research Registry – Registrant Numbers



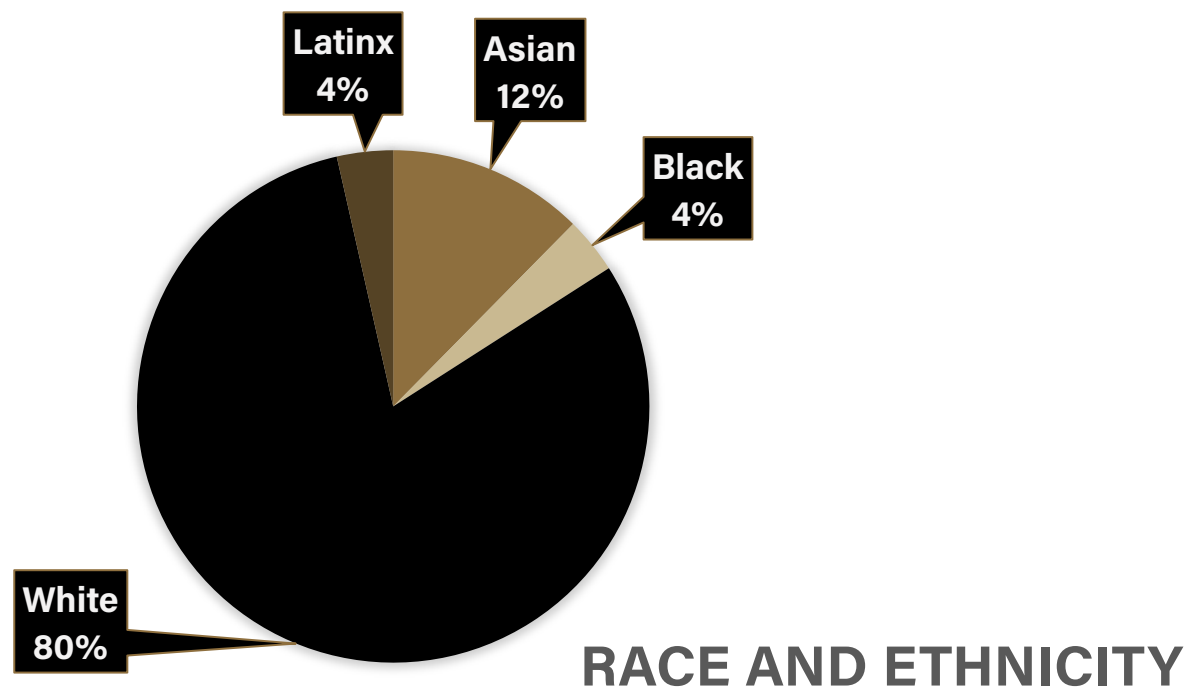
# *HHS Research Registry – Registrant Description*



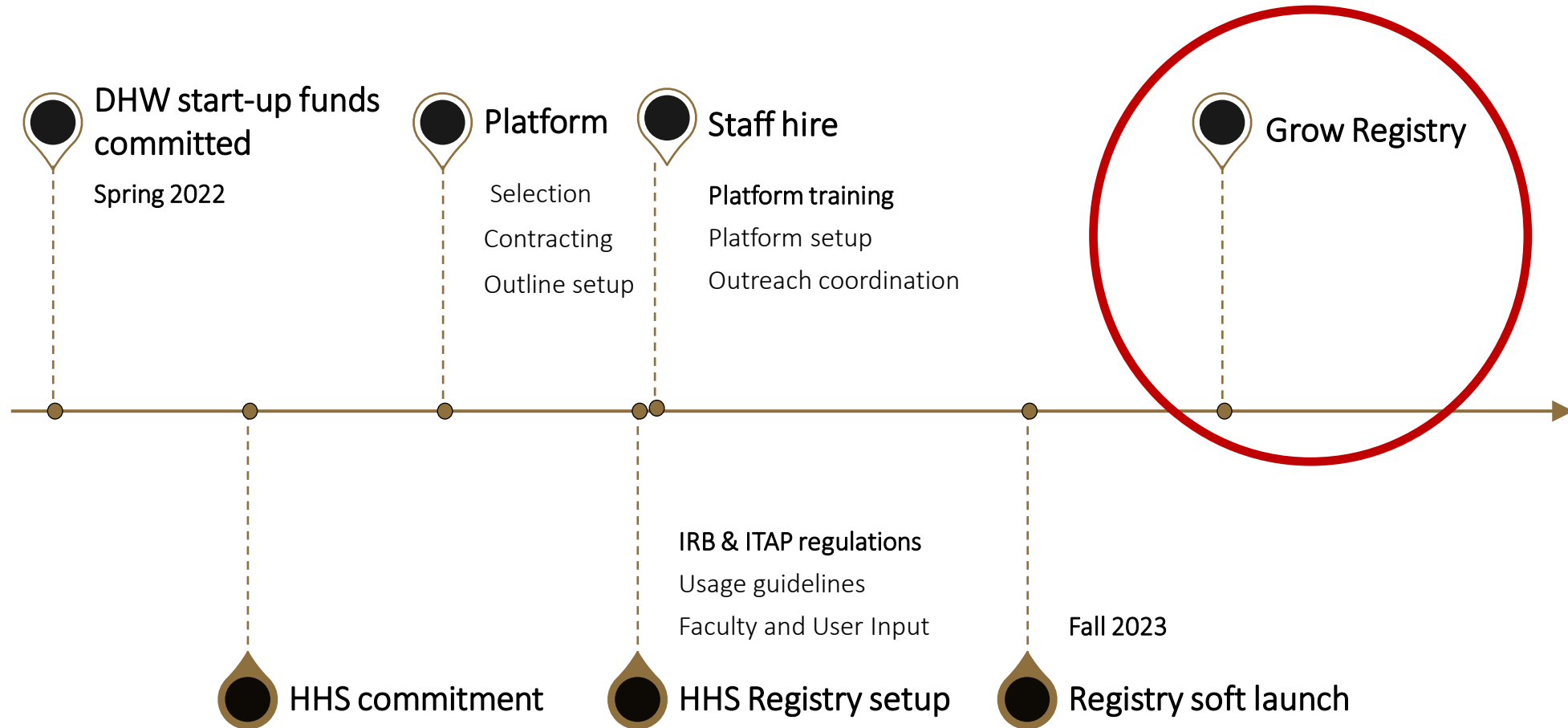
## *HHS Research Registry – Registrant Description*



## *HHS Research Registry – Registrant Description*



# What's Next?



# Contact Us

- Interested in helping with the registry Spring/Summer 2024?
- Want us to target a population for you?
- Looking to incorporate the registry into your IRB?
- Have ideas about making the registry better?

We would love to hear from you: [HHSResearchRegistry@purdue.edu](mailto:HHSResearchRegistry@purdue.edu)

Amanda Warmbold  
Lead Administrative Assistant  
[awarmbol@purdue.edu](mailto:awarmbol@purdue.edu)

AJ Schwichtenberg  
Dean's Fellow, College of Health and Human Sciences  
Associate Professor, Human Development and Family Science  
[ajschwichtenberg@purdue.edu](mailto:ajschwichtenberg@purdue.edu)

# ***UNIVERSITY SENATE UPDATE***

**Susan South**

**Vice-Chair, Senate**

**HHS Fall Faculty Meeting 2023**



**PURDUE**  
UNIVERSITY.

College of Health and  
Human Sciences

## Brief Review of Process

- Work happens mainly in committees
- 104 Senators, 8 standing committees
  - Advisory; Educational Policy; Equity, Diversity, Inclusion; Faculty Affairs; Nominating; Steering; Student Affairs; University Resources Policy
- Chair of the Senate, Brian Leung, send email to [senate-chair@purdue.edu](mailto:senate-chair@purdue.edu) or use web form
- Chair of the Steering Committee, Libby Richards, assigns issues to the proper committee
- Secretary of the Faculties, Manushag (Nush) Powell; can assist Senators with motions and parliamentary norms

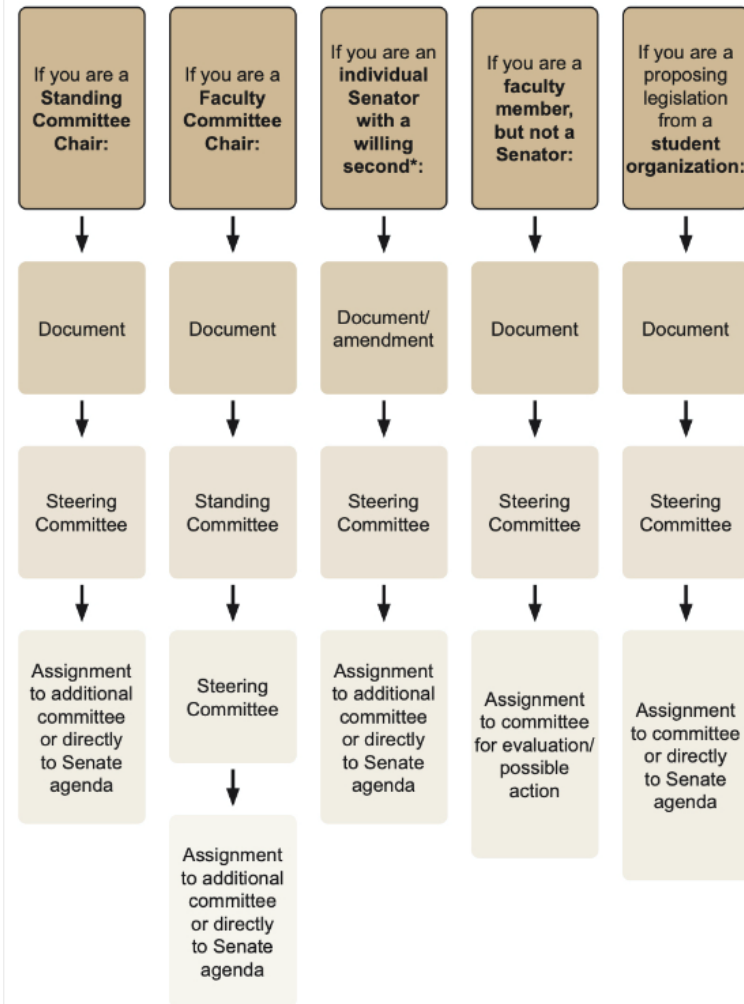
## Current Work in Committees

- Ad Hoc Artificial Intelligence committee which will work with EPC
- FA: apportionment of the Senate, recent changes in P&T process
- EDIC: DEI efforts in the wake of recent Supreme Court decisions
- SAC: graduate student compensation

## On Senate Radar

- Continuing to monitor PU-Indianapolis faculty and how they will be represented in the Senate
- Plans for the Graduate School
- Faculty hiring and promotion/tenure decisions
- Benefits (e.g., health insurance) updates for 2024

## Process for Bringing Legislation to the Senate



\*An individual Senator with a willing second may also move an amendment on the Senate floor or bring a Document to the Senate as New Business, although this is not ideal.

For action to be taken on <b>22 January 2024</b>	Noon on 5 January	20 November 2022	Noon on 3 November
For action to be taken on <b>19 February 2024</b>	Noon on 2 February	22 January 2024	Noon on 5 January
For action to be taken on <b>18 March 2024</b>	Noon on 1 March	19 February 2024	Noon on 2 February
For action to be taken on <b>15 April 2024</b>	Noon on 29 March	18 March 2024	Noon on 1 March

# ***QUESTIONS?***

ssouth@purdue.edu