

# HHS UPDATE

Spring Faculty Meeting

April 11, 2024

Aaron Bowman, Interim Dean



College of Health and  
Human Sciences

# Thank you for your outstanding service!

Under her leadership, new DEI initiatives and programs have been developed at all levels of the college, resulting in an innate understanding throughout HHS that diversity, equity and inclusion are vital to the progress of health and human sciences research, learning and engagement.

**Margo Monteith**  
Distinguished Professor of  
Psychological Sciences,  
Inaugural associate Dean of  
DEI (Jan 2020-July 2024)



# Thank you and best wishes!

Preeti Sivasankar has been appointed vice president for research innovation and will head the division of Strategic Interdisciplinary Research in the Office of Research, effective May 1.

**Preeti Sivasankar**  
Professor and Department Head,  
Speech, Language, and Hearing  
Sciences



# Thank you and best wishes!

Appointed associate vice provost for Purdue University in Indianapolis, effective Nov. 13, 2023. Although he has stepped down as PSY department head, he will continue to serve on the PSY faculty and maintain an active research program in West Lafayette.

**Jeff Karpicke**  
James V. Bradley Professor of  
Psychological Sciences



CONGRATULATIONS!



College of Health and  
Human Sciences

# 2024 HHS University Faculty Scholar

The University Faculty Scholars program is designed to recognize outstanding mid-career faculty who are on an accelerated path for academic distinction.



**Heather Eicher -Miller**  
Professor  
Nutrition Science



**Christine Marceau**  
Associate Professor  
Human Development and  
Family Science

# Purdue University Teaching Academy Fellow

Membership in the Teaching Academy recognizes outstanding and scholarly teaching in the graduate, undergraduate or engagement programs of Purdue University.

**Christi Masters**  
Clinical Associate Professor  
Speech, Language, and  
Hearing Sciences



## 2023 Showalter Faculty Scholar (selected)

The Ralph W. and Grace M. Showalter Research Trust annually provides funding to Purdue in support of scientific and medical research.

**Jennifer Freeman**  
Professor  
Health Sciences





# 2024 Walk the Talk Award

Presented annual to those individuals who most exemplify strong ethical character in their dealings with others, champion ethical practices or programs, or apply personal values in a manner that demonstrates integrity and high standards of excellence.



**Laura Murray -Kolb**  
Department Head, Professor  
Nutrition Science



**Kendra Coons -Osborne**  
Coordinator, HHS Success Mentors  
Student Services

## 2024 Excellence in Advising – Faculty Advisor Award

Awarded annually by the Global Community of Academic Advising ( aka NACADA) Region V to an individual whose primary responsibility is teaching and who spends a portion of their time providing academic advising services to students.

**Lisa Hilliard**  
Clinical Professor and  
Academic Advisor  
School of Health Sciences



# 2024 Outstanding Advisor Award

Presented annually to an academic advisor by the Purdue Academic Advising Association in recognition of dedication to student success and active involvement in the campus community.

**Jennifer Fecher**  
Lead Academic Advisor  
Health and Kinesiology



# 2024 Flora Roberts Award

Presented annually to one outstanding senior in recognition of their high standards of academic achievement, outstanding leadership, strength of character and contributions to Purdue University. The award is among the highest honors bestowed upon a graduating senior.

**Brayden Johnson**  
Double major in  
Psychological Sciences (HHS),  
Law and Society (CLA)



## 2024 Focus Award

Presented annually in recognition of those who have made an outstanding contribution to furthering Purdue's commitment to disability accessibility and disability inclusion.

**Amy Loviska**  
PhD student  
Human Development  
and Family Science



# 2023 Showalter Early Career Awards

The Ralph W. and Grace M. Showalter Research Trust annually provides funding to Purdue in support of scientific and medical research.



From left to right:

**Priyanka Baloni** , assistant professor of health sciences

**Annabel Biruete** , assistant professor of nutrition science

**Igor Fernandes** , assistant professor of health and kinesiology

**Natalia Rodriguez** , assistant professor of public health

**Patricia Wolf** , assistant professor of nutrition science



College of Health and  
Human Sciences

# *Other College Updates*

- College Updates and Activities
- Dean Search Update
- HHS Listening Sessions, HHS Structure and Alignment
- Open Q&A (including pre-submitted questions)

# *Nursing and Pharmacy Education Building*

The next giant leap in collaborative learning for healthcare professionals.



So far, the university, together with the colleges of Pharmacy and Health and Human Sciences, has received private or institutional commitments of more than \$70 million. The Indiana legislature approved an \$89 million appropriation.



College of Health and  
Human Sciences



# HHS Undergraduate Stats

## HHS STUDENT BODY MAKEUP (SPRING 2024)

- 68.4% IN resident
- 75.1% female
- 15.3% URM
- 20.7% first-generation
- 18.8% enrollment growth since 2018
- 34.2% growth in URM students since 2018

## HHS POINTS OF PRIDE

- 18.8% enrollment growth since 2018
- 34.2% growth in URM students since 2018
- Four-year graduation rate is 77.4%, university's is 66.6%
- 94.5% of 2022 HHS graduates found jobs (57.5%) or sought further education (37%) after finishing their bachelor's degrees.



College of Health and  
Human Sciences

## GROWTH VIA NEW BEGINNERS

HHS grows new beginners (935 fall 2023) and CODOs (362 net in fall 2023, 334-474 net range since 2017).



**5,688 HHS STUDENTS**

4,994 Undergraduate

694 Graduate

(351 Master's, 337 Doctoral,  
5 Certificate, 1 non-degree)

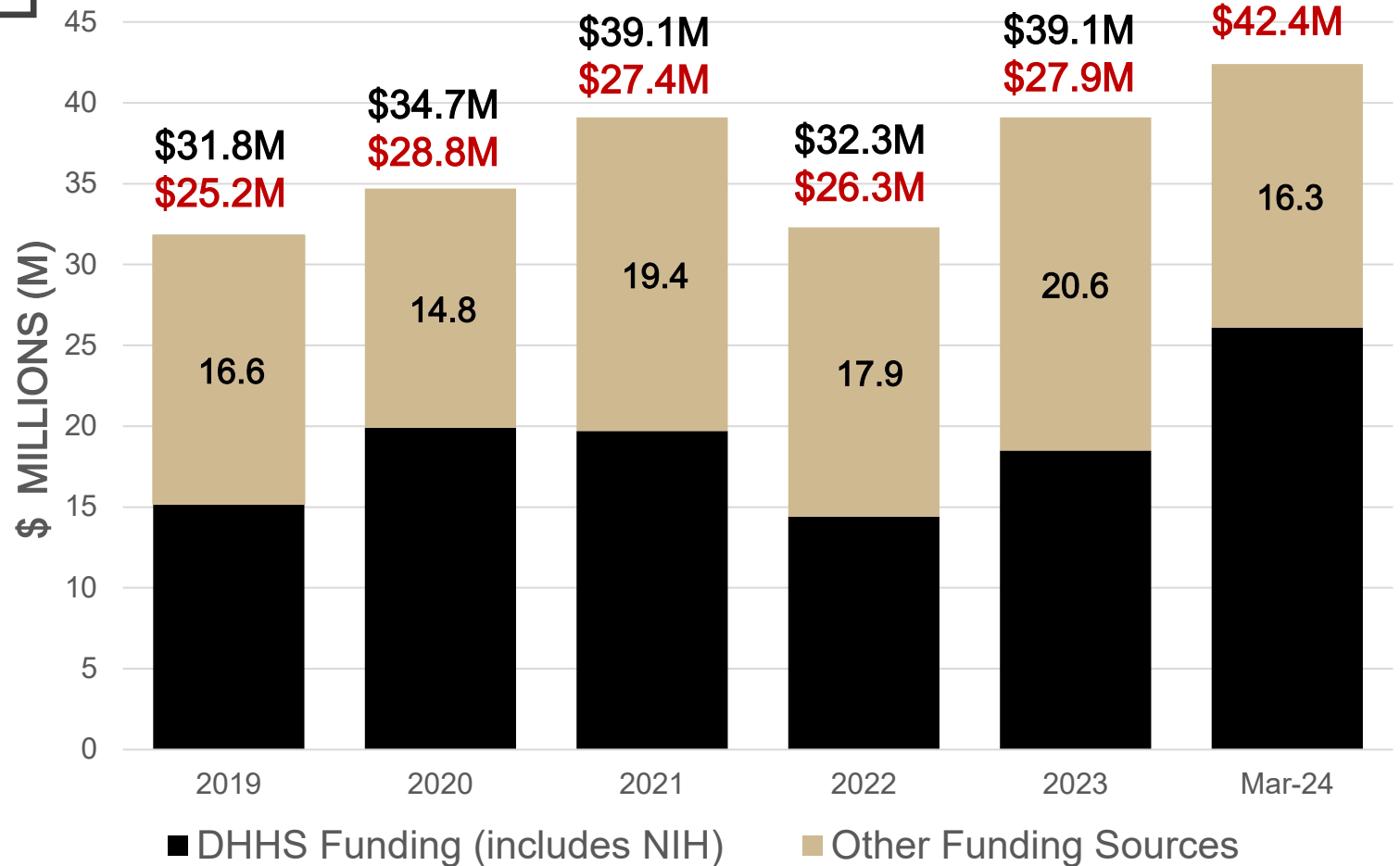
# RESEARCH

EXCELLENCE

## INCREASED SPONSORED AWARDS RECEIVED IN HEALTH AND HUMAN SCIENCES

As of current FY 2024, HHS is **#1** Purdue college for DHHS-funded awards total, and **#2** Purdue college for DHHS-funded awards per T/TT faculty; has consistently been in top 3 for 10+ years.

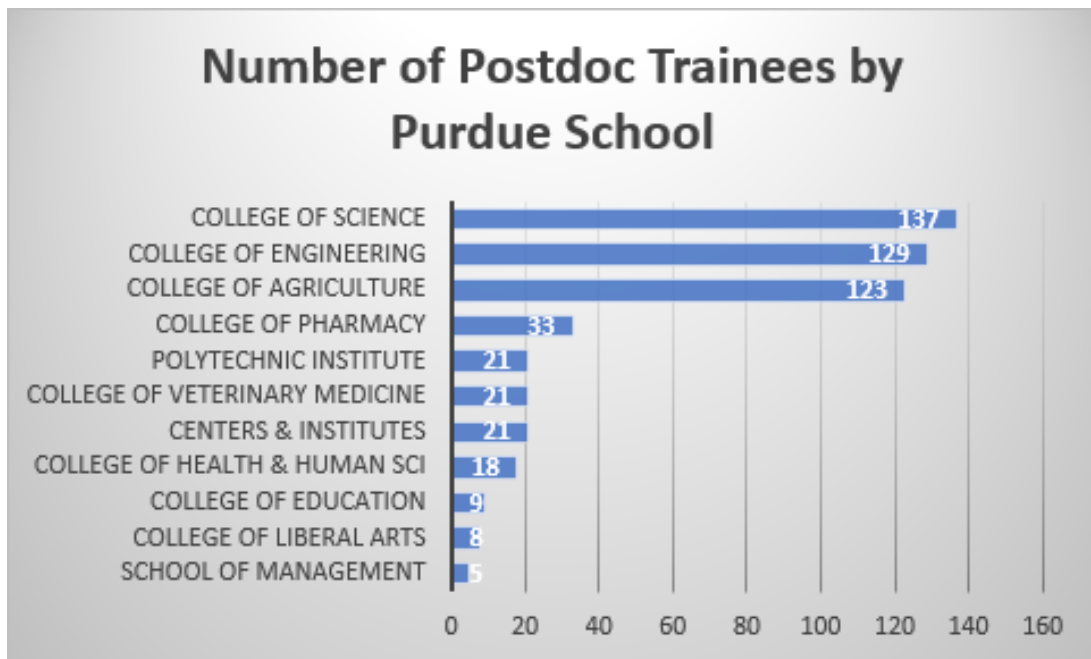
### Sponsored Awards



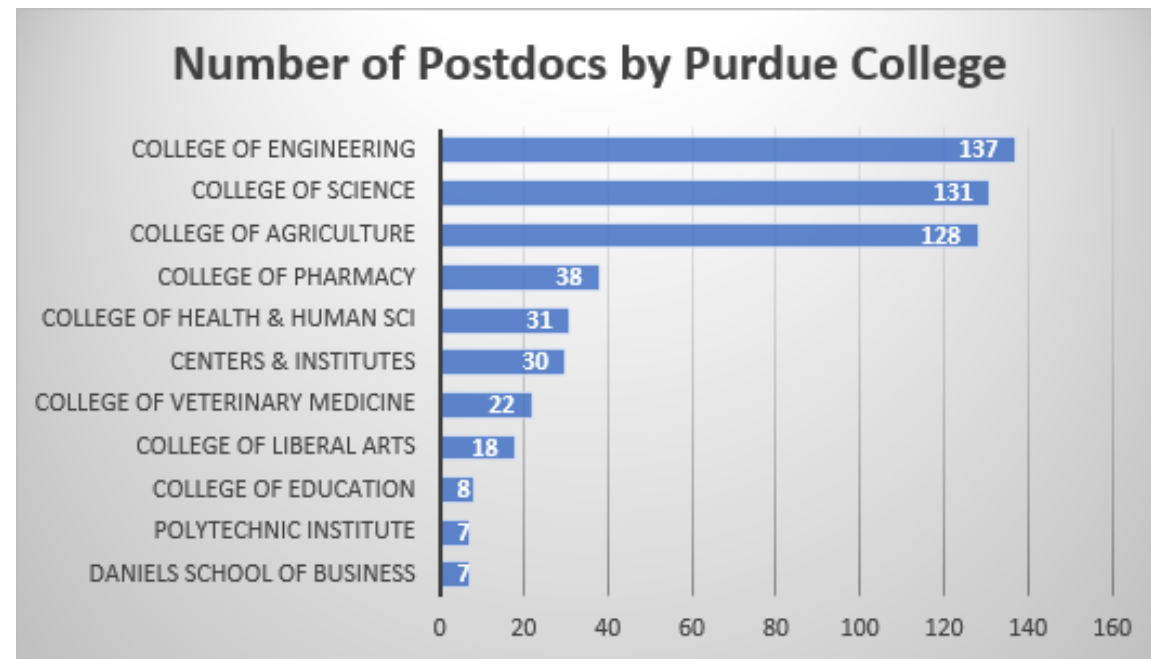
College of Health and Human Sciences

NOTE: **Number in red** indicates awards as of March of that fiscal year—equivalent to partial FY 2024 data.

# HHS could strengthen other metrics of research excellence



June 2023 (514 total, 87% international)



April 2024 (654 total, 86% international)

# HHS Business Office Update

- AD Research McBride— Grants Management Listening Sessions
- HHS Budget Request:
  - R&R investment of \$1.5 million for research space
  - Funding to increase TA/RA-ship salaries



# *Other College Updates*

- College Updates and Activities
- Dean Search Update
- HHS Listening Sessions, HHS Structure and Alignment
- Open Q&A (including pre-submitted questions)

***THANK YOU!***

Have a wonderful summer!



College of Health and  
Human Sciences

# Additional Slides



# Spring 2024 HHS Snapshot

9 ACADEMIC UNITS  
22 UNDERGRADUATE MAJORS

Health and Kinesiology (1 major, 602 students)

Health Sciences (4 majors, 884 students)

Hospitality and Tourism Management (4 majors, 733 students)

Human Development and Family Science (4 majors, 222 students)

Nursing (1 major, 641 students)

Nutrition Science (4 majors, 229 students)

Psychological Sciences (2 majors, 1175 students)

Public Health (1 major, 187 students)

Speech, Language, and Hearing Sciences (1 major, 321 students)



# Fall 2024 Admissions Status

4/1/2024		Application count				Admits count				Accepts count			
		Resident	Non-Reside..	Internation..	Total	Resident	Non-Reside..	Internation..	Total	Resident	Non-Reside..	Internation..	Total
West Lafayette at Indianapolis	Engineering	474	2,822	660	3,956	366	2,067	342	2,775	94	87	21	202
	Polytechnic	61	127	39	227	39	105	25	169	11	2	0	13
	Science	138	785	409	1,332	108	622	253	983	18	20	19	57
	<b>Total</b>	<b>673</b>	<b>3,734</b>	<b>1,108</b>	<b>5,515</b>	<b>513</b>	<b>2,794</b>	<b>620</b>	<b>3,927</b>	<b>123</b>	<b>109</b>	<b>40</b>	<b>272</b>
West Lafayette	Agriculture	763	1,168	257	2,188	600	640	105	1,345	301	63	9	373
	Daniels School of B..	1,516	4,986	1,833	8,335	999	2,821	683	4,503	284	259	43	586
	Education	370	295	62	727	316	164	13	493	99	19	2	120
	Engineering	1,649	18,306	4,223	24,178	1,004	8,032	1,098	10,134	426	702	146	1,274
	Exploratory	873	742	528	2,143	793	565	57	1,415	268	63	10	341
	<b>Health &amp; Human Sci</b>	<b>2,283</b>	<b>4,289</b>	<b>724</b>	<b>7,296</b>	<b>1,590</b>	<b>2,051</b>	<b>251</b>	<b>3,892</b>	<b>485</b>	<b>149</b>	<b>19</b>	<b>653</b>
	Liberal Arts	840	2,311	1,304	4,455	704	1,590	285	2,579	165	98	9	272
	Pharmacy	263	512	73	848	232	353	40	625	114	33	3	150
	Polytechnic	861	3,197	466	4,524	584	1,606	206	2,396	331	261	42	634
	Science	1,781	11,123	4,763	17,667	1,443	5,206	870	7,519	473	245	50	768
	Veterinary	237	403	15	655	85	110	1	196	37	40	1	78
<b>Total</b>	<b>11,436</b>	<b>47,332</b>	<b>14,248</b>	<b>73,016</b>	<b>8,350</b>	<b>23,138</b>	<b>3,609</b>	<b>35,097</b>	<b>2,983</b>	<b>1,932</b>	<b>334</b>	<b>5,249</b>	
<b>Grand Total</b>	<b>12,109</b>	<b>51,066</b>	<b>15,356</b>	<b>78,531</b>	<b>8,863</b>	<b>25,932</b>	<b>4,229</b>	<b>39,024</b>	<b>3,106</b>	<b>2,041</b>	<b>374</b>	<b>5,521</b>	



College of Health and Human Sciences

HHS Admits count: 3,892 (3,715 LY) HHS Accepts count: 653 (669 LY)

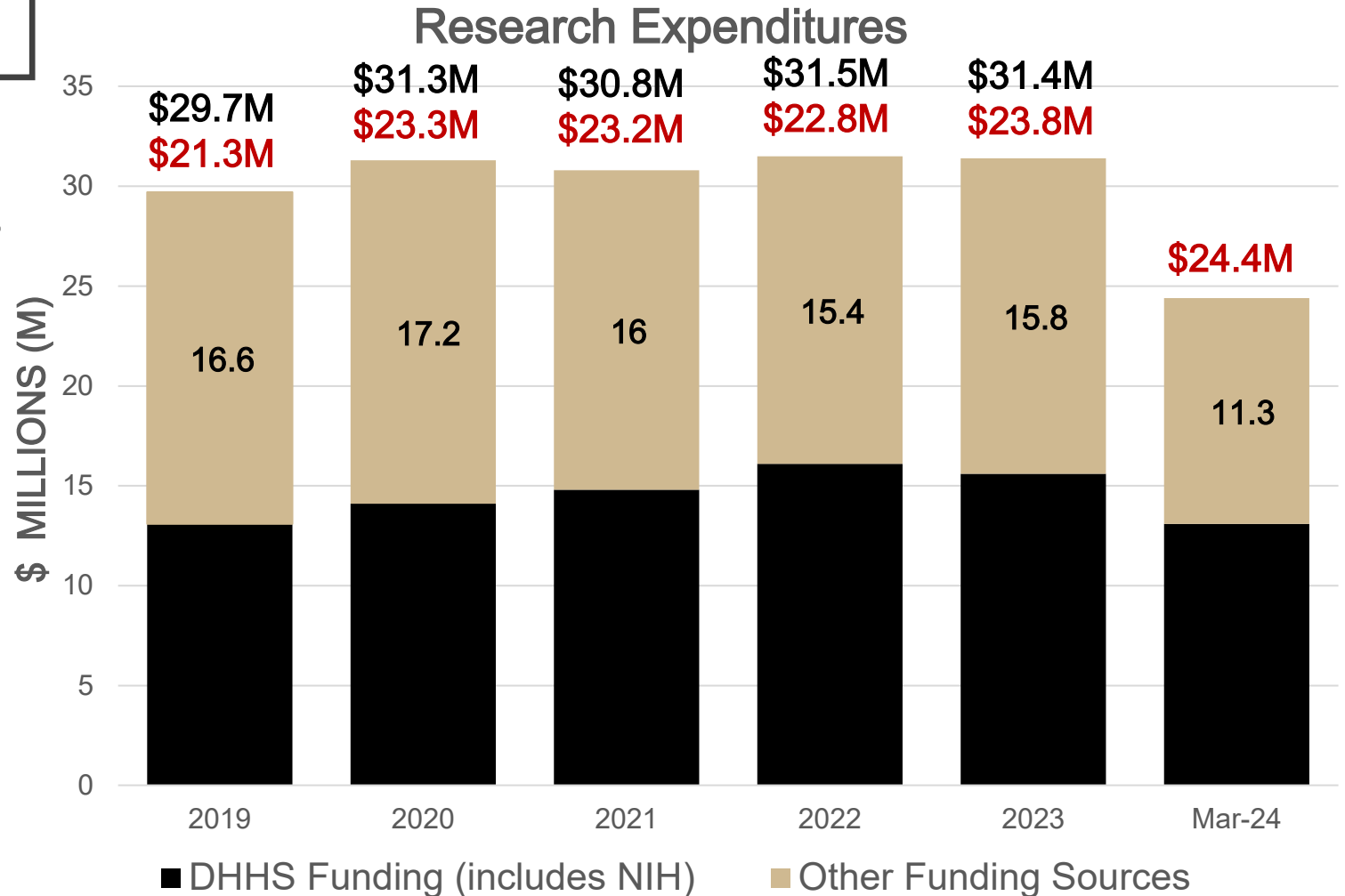
HHS Admits rate: 53.3% (52.3% LY) HHS Accepts rate: 16.8% (18% LY)

# RESEARCH

EXCELLENCE

## INCREASED EXTRAMURAL RESEARCH EXPENDITURES IN HEALTH AND HUMAN SCIENCES

As of current FY 2024, HHS is **#2** Purdue college for DHHS-sponsored program expenditures for both dollars and per T/TT faculty; has consistently been in top 3 for 10+ years.

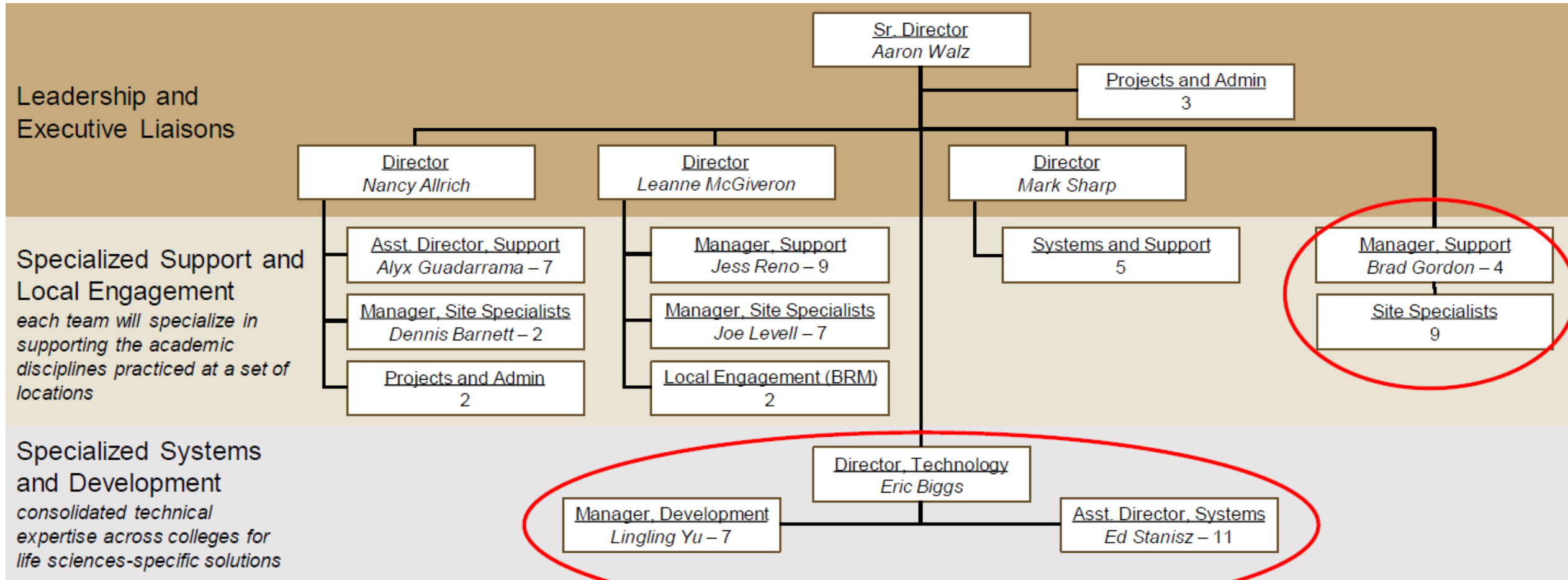


College of Health and Human Sciences

NOTE: **Number in red** indicates expenditures as of March of that fiscal year — equivalent to partial FY 2024 data.

# Purdue Life Sciences

## Integrating IT management across AG, HHS, PHARG VET Med



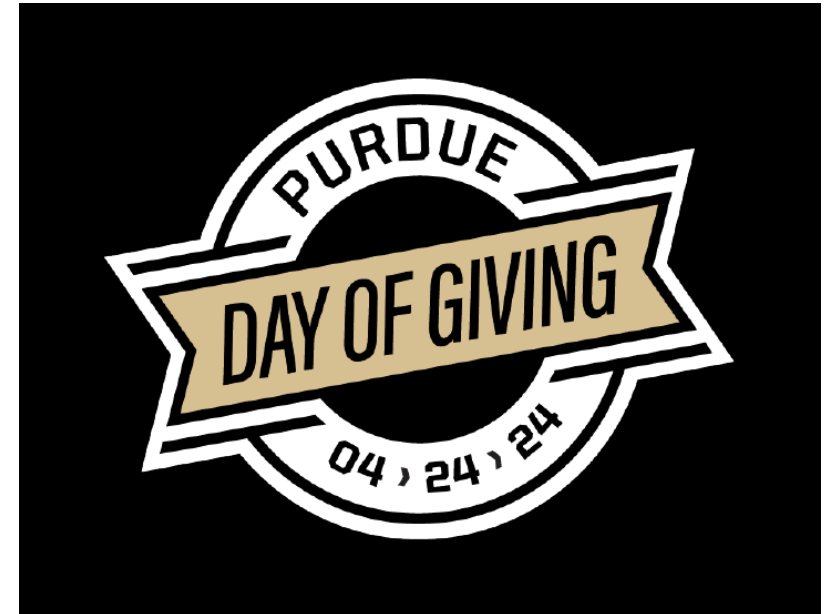
# *HHS Development*

\$11 million raised July 1, 2020-present

**Purdue Day of Giving is April 24.**

Help HHS win bonus funds by sharing the Purdue Day of Giving video and participating in one or more hourly challenges. Details coming to your email inbox soon.

Thank you for supporting HHS!



# HHS Research Initiatives

- Health of the Forces
- Center for Rural Health
- HHS Research Registry



## Health and Human Sciences Research Registry

Your search for research study participants starts here.

About the Registry	Getting Started	Use the Registry	
<p>The HHS Research Registry is a resource that simultaneously elevates Purdue's visibility, facilitates positive relationships between researchers and participants, and accelerates research. The registry includes a list of individuals, families and community partners who wish to be contacted about research opportunities.</p>	<p>Sign up to use the Registry:</p> <ol style="list-style-type: none"><li>1. Provide PI and study details</li></ol>  <p><a href="https://tinyurl.com/hhsregistry">tinyurl.com/hhsregistry</a></p> <ol style="list-style-type: none"><li>2. Sign use contract</li><li>3. Add the HHS Research Registry in your IRB enrollment plan.</li></ol>	<ol style="list-style-type: none"><li>1. Receive contact information for potential participants.</li><li>2. Track contacts and enroll participants.</li><li>3. Share the registry with participants not contacted via the registry. <a href="https://purdue.link/rr">purdue.link/rr</a></li><li>4. Contribute to research success for your work and others.</li></ol>	  